

Mr. Birb

Free crochet pattern

@totally_stitchcraft



01/08



Materials

Yarn: any chunky blanket yarn in 3 colors will work, this is the yarn I have used:

- Bernat Blanket (3/4 ball main color (white))
- Bernat Blanket (1/4 ball accent color (country blue))
- Yarn Bee Velvety Smooth (1/4 ball (orange))

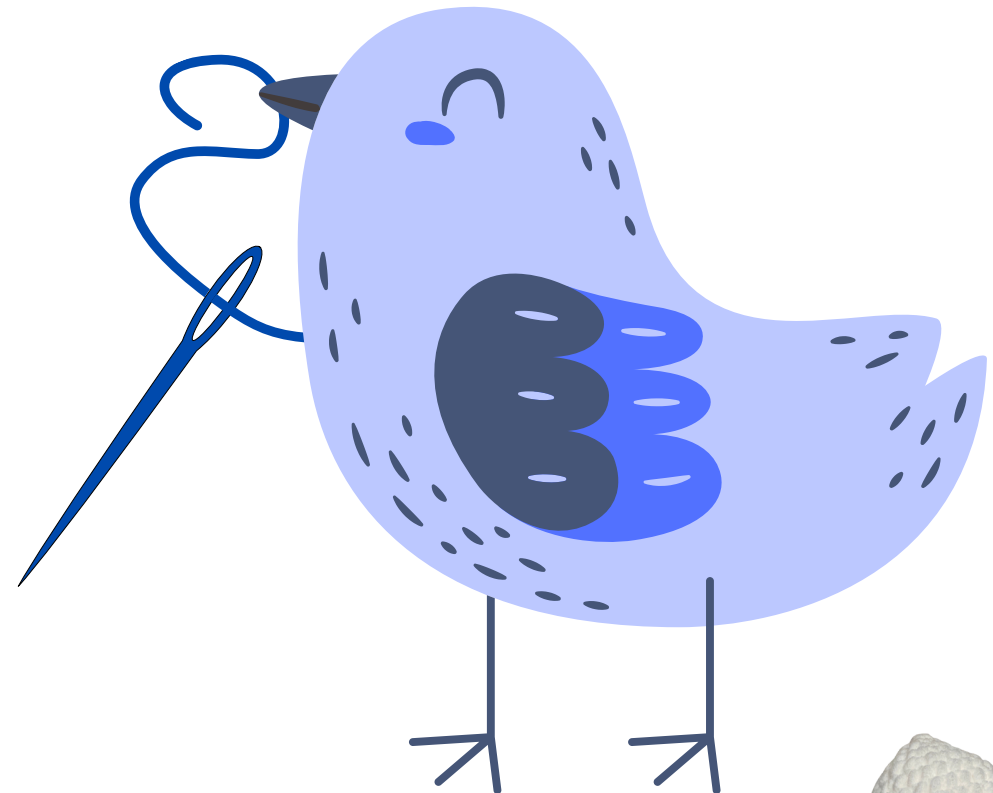
Crochet Hoot: size 5mm

Safety Eyes: 12mm

Polyfil (or other stuffing)

Tapestry Needle

Stitch Markers



@totally_stitchcraft

02/08



Terminology

SC: single crochet

MR: magic ring

inc: 2 single crochet into same stitch

dec: single crochet two stitches together

SL-ST: slip stitch

(N SC, inc)*X: means single crochet N times then in next stitch place two single crochet into same stitch and repeat X times

(N): gives the count of stitches in each round



@totally_stitchcraft



03/08



The head and neck

Beginning at the top of the head and working down

R1. 6 SC in MR (6)

R2. (inc)*6 (12)

R3. (1 SC, inc)*6 (18)

R4. (2 SC, inc)*6 (24)

R5. (3 SC, inc)*6 (30)

R6. (4 SC, inc)*6 (36)

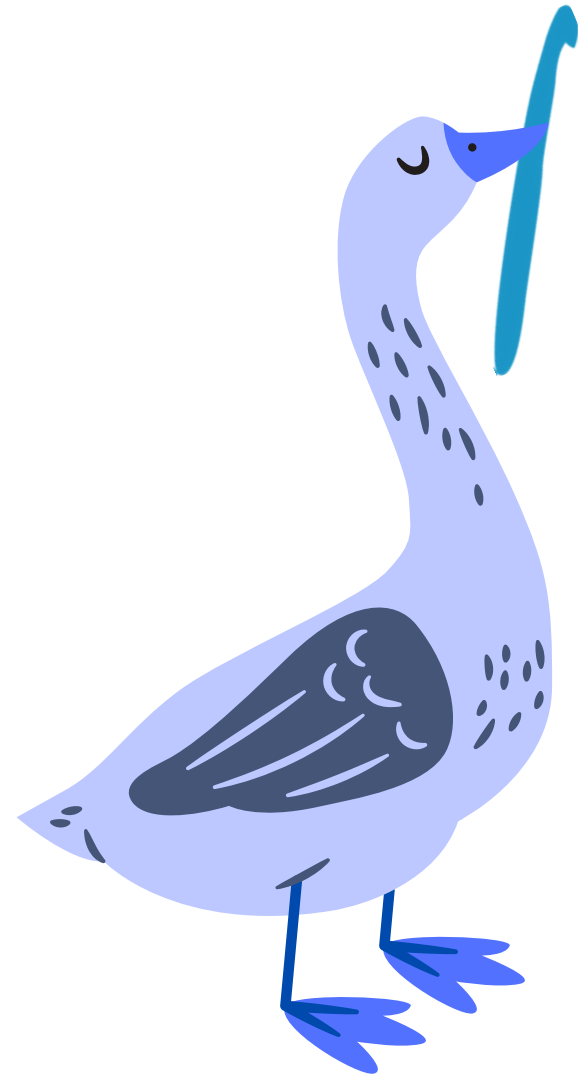
R7-14. 36 SC (36)

R15. (4 SC, dec)*6 (30)

R16. (3 SC, dec)*6 (24)

End head and begin neck

R17-26. 24 SC (24)



At this point, add the safety eyes of your choice seven stitches apart between rows 10 and 11, the beak will be added later below the eyes on row 12

Stuff to this point with fiber fill

@totally_stitchcraft



04/08



The body

End neck begin body

R27. (7 SC, inc)*3 (27)

R28-29. 27 SC (2 rows)

R30. (8 SC, inc)*3 (30)

R31-32. 30 SC (2 rows)

R33. (9 SC, inc)*3 (33)

R34-35. 33 SC (2 rows)

Switch to blue yarn

*do not cut yarns when
switching

R36. (10 SC, inc)*3 (36)

R37. 36 SC

Switch to white yarn

R38. 36 SC

R39. (11 SC, inc)*3 (39)

Switch to blue yarn

R40-41. 39 SC (2 rows)

Switch to white yarn

R42. (12 SC, inc)*3 (42)

R43. 42 SC

Switch to blue yarn

R44. 42 SC

R45. (13 SC, inc)*3 (45)

Switch to white yarn

R46-47. 45 SC (2 rows)

Switch to blue yarn

R48. (14 SC, inc)*3 (48)

R49. 48SC

Switch to white yarn

R50-51. 48 SC (2 rows)

Switch to blue yarn

R52-53. 48 SC (2 rows)

End of blue yarn, cut and
tuck inside

@totally_stitchcraft





05/08



The body cont.

R54. (6 SC, dec)*6 (42)

R55. (5 SC, dec)*6 (36)

R56. (4 SC, dec)*6 (30)

R57. (3 SC, dec)*6 (24)

R58. (2 SC, dec)*6 (18)

Stuff remainder with fiber fill

R59. (SC, dec)*6 (12)

R60. (Dec)*6 (6)

Cut yarn, weave in end and
secure



@totally_stitchcraft

06/08



The wings and tail

Wings (2) & tail (1) (make 3 total with white)

R1. 6 SC in MR (6)

R2. (inc)*6 (12)

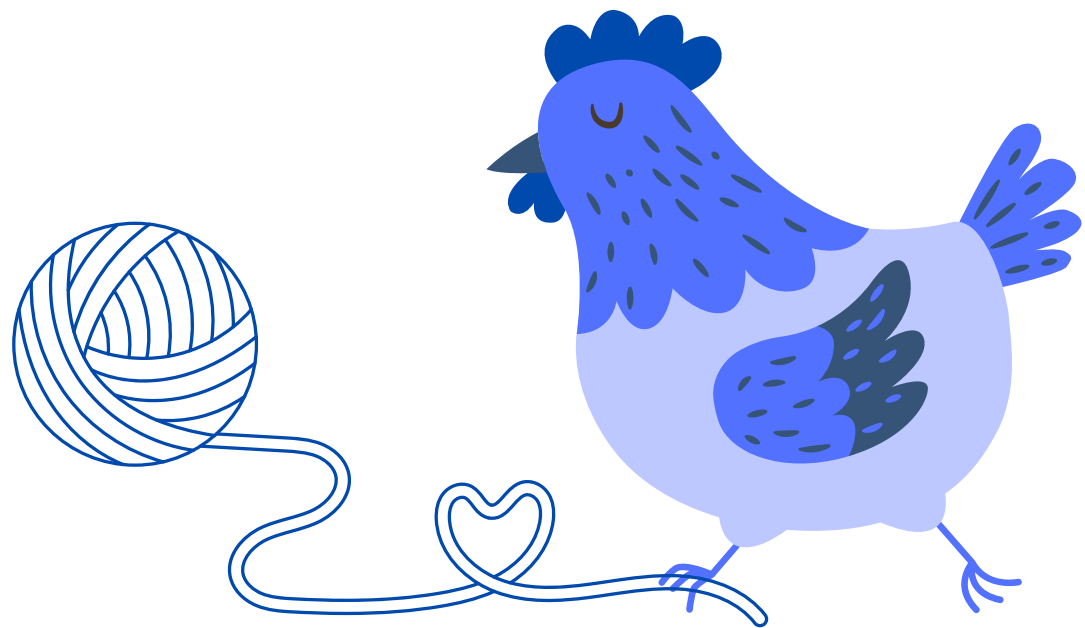
R3. (1 SC, inc)*6 (18)

R4. (2 SC, inc)*6 (24)

R5. (3 SC, inc)*6 (30)

R6. (4 SC, inc)*6 (36)

R7-8. 36 SC (2 rows)



For wings, fold in half and SL ST together, leave a tail to weave to body

For tail, leave a very long tail to weave to body

@totally_stitchcraft



07/08



The legs and beak

Feet (2) with orange

Working from top of leg to flipper

R1. 6 SC in MR (6)

R2-19. 6 SC (18 rows)

R20. (inc)*6 (12)

R21. (1 SC, inc)*6 (18)

R22. (2 SC, inc)*6 (24)

R23-24. 24 SC (2 rows)

Fold flat and SL ST to join sides and weave in ends

Beak (1) with orange

R1. 6 SC in MR (6)

R2-6. 6 SC (5 rows)

Cut yarn, leave a long tail to sew to body



@totally_stitchcraft

08/08

Assembly

Attach the beak, long side to head, on round 12 evenly between the eyes

Attach the wing opposite each other on the body on the first round of blue yarn, only attach at one corner of the wing, being sure the first round of the wing is pointing forward

Attach the tail on the backside, fill with fiber fill before completing sewing

Attach the feet to the last round of blue yarn, 6 stitches apart



@totally_stitchcraft

**Did you enjoy
this pattern?**

**Be sure to like,
save and share!**



@totally_stitchcraft

